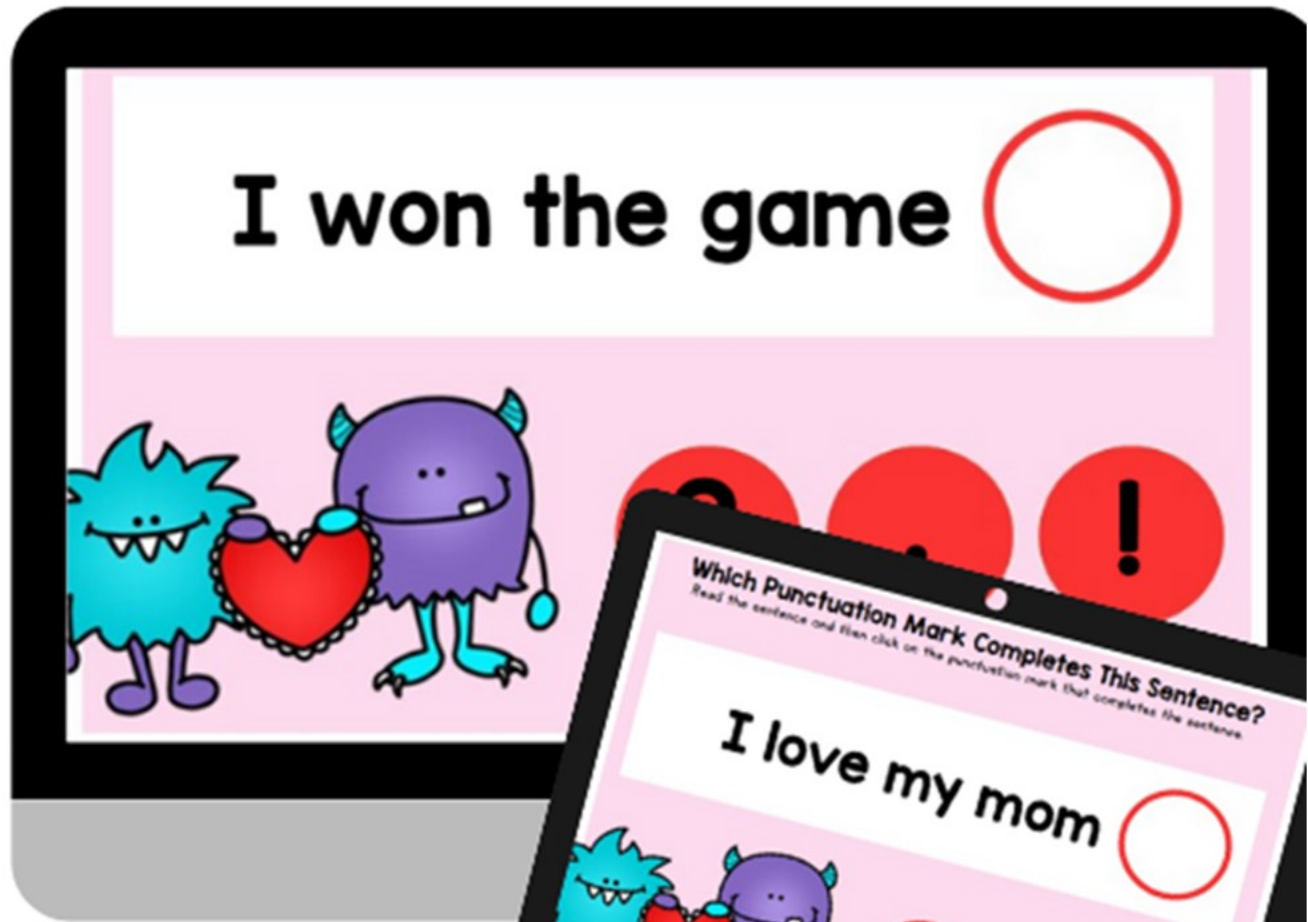


Boom Card

Digital Task Cards



Skill Focus

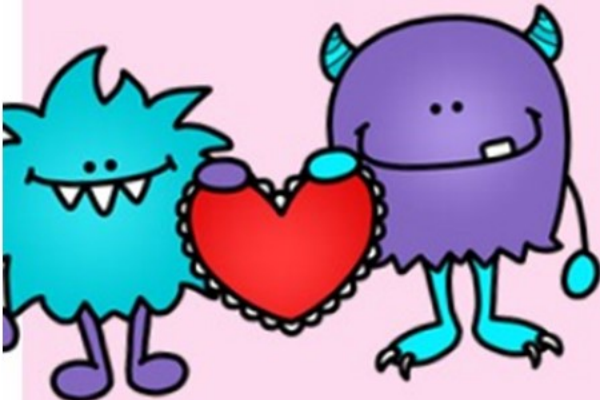


HOW Do Students USE THESE DIGITAL TASK CARDS:
Students look at the uppercase letter and match it to the
same lowercase letter.

Which Punctuation Mark Completes This Sentence?

Read the sentence and then click on the punctuation mark that completes the sentence.

I love my mom



Clicking Skills

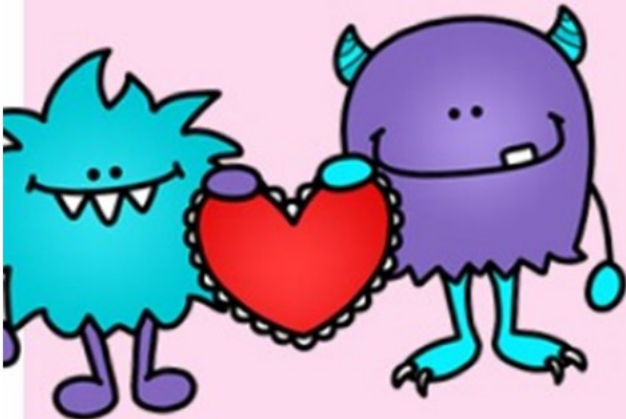
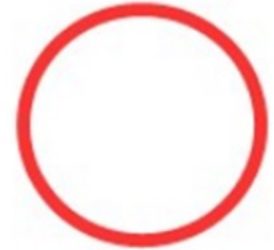


Whether your students are using a computer & mouse or tablet, clicking skills will be strengthened with this digital game!

Which Punctuation Mark Completes This Sentence?

Read the sentence and then click on the punctuation mark that completes the sentence.

I won the game



What Are Boom Cards?



Boom Cards™ live in the cloud.
They can't be printed.

WHAT'S INCLUDED:

PDF Document with link to download your Boom Cards™
26 Cards with letter matching tasks.
There is one card for each letter, matching uppercase & lowercase letters together.

HOW Do Students USE THESE DIGITAL TASK CARDS:

Students look at the uppercase letter and match it to the same lowercase letter.

Why Boom Cards?



- ✓ Interactive, engaging and fun!
- ✓ Paperless - no printing, photocopying, laminating or cutting!
- ✓ Self-grading - immediate feedback to students!

New to Boom Learning? [Check out this video](#) that explains all about using Boom Cards™.

Boom Cards™ can also be linked to other Learning Management Systems, such as Google Classroom and Seesaw. Check out [this](#) blog post for more information.

Using Boom Cards



To use Boom Cards™, you **must** be connected to the Internet. Boom Cards™ play on modern browsers (Chrome, Safari, Firefox, and Edge).

Apps are available for Android, iPads, iPhones, and Kindle Fires. For security and privacy, adults must have a Boom Learning account to use and assign Boom Cards™.

You will be able to assign the Boom Cards™ you are buying with "Fast Pins," (play provides instant feedback for self-grading Boom Cards™). Fast Play is always a free way for students to engage with Boom Cards™ decks. For additional assignment options you'll need a premium account.

****If you are new to Boom Learning, you will be offered a free trial of our premium account. Read here for details:*

<http://bit.ly/BoomTrial>.

If you choose not to stay on a premium account after your free trial, you will still be able to assign all your Boom Cards™ to as many students as you see fit using Fast Play pins (which give instant feedback for decks that are self-grading).

Try Them Out!



Still Not Sure About Boom Cards?

You can preview these digital task cards & try them out before you buy them!



Be sure to follow my store to be alerted of new products. Click [HERE](#)

Let's Connect!

[Pinterest](#) - [Facebook](#) - [Instagram](#) - [Blog](#)